

National Event Bid Form

The National Events Committee is seeking applications to co-host our future National Events. Please complete the following form and enclose photos and descriptions of stadium, practice facilities, tracking fields, and practice tracking facilities if applicable. Also, be prepared to present your bid to the General Board Meeting.

USCA-GSD National Championship, USCA's Working Dog Championship, USCA Sieger Show and USCA National Show	
Proposed Dates	
Co-Host club(s)	
Officers of Co-Host club(s)	
Location (City, State, and Region)	
Closest Airport (does it accept 500 size crates?)	
Past experience in Co-hosting regional and national events	
Approximate weather conditions (average daily temperatures) for the trial dates	
Host Hotel options	
Contact Information for Applicant	
Please include e-mail address	

Please add photo and description of stadium, practice facilities, description of tracking fields and practice tracking. Photos are a plus.

Submit your bid package to:

National Events Committee (emails are on the USCA website)



2025 SIEGER SHOW BID

Quinebaug Schutzhund Club



Experience

Quinebaug Schutzhund Club & New England Region

- ▶ From Regional Breed and IGP event to WDC and GSD Nationals, this region has it covered.
- ▶ We have the support of multiple clubs in the region
- ▶ QSC members are well versed in running large events
- ▶ QSC has hosted numerous regional championship, breed evaluations and IGP as well as 2025 GSD Nationals
- ▶ We have an artist to design logos/merchandize/trophies
- ▶ We have a full support of Town of Pomfret Recreational department

Location

Pomfret Center, CT - New England Region



- Located in a quaint area of Connecticut also called “The Quiet Corner”
- Beautiful soccer field with enough space for multiple rings and bitework area
- Plenty of parking
- Indoor office area for staff
- Indoor restrooms for staff
- Dedicated area for food truck
- Dedicated area for equipment vendors

Attractions

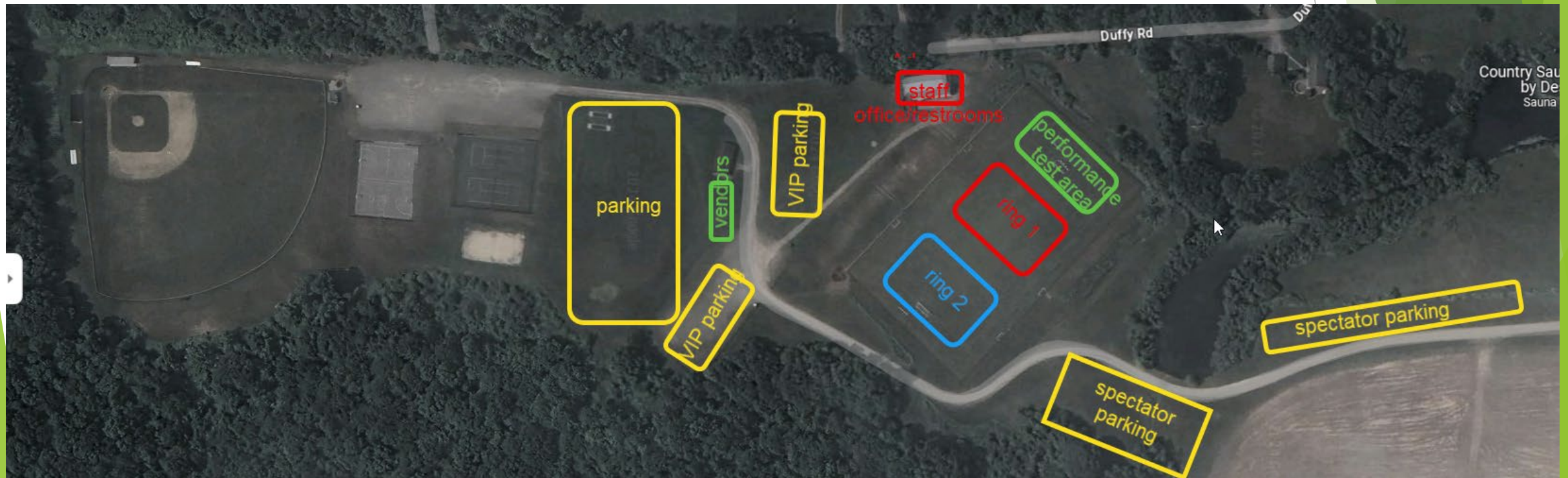
Tourism possibilities for visitors from around the world

- ▶ Boston and NY cultural and entertainment options
- ▶ Two of the top-rated casinos in the World 30 minutes away offering world class dining and entertainment options.
- ▶ Sturbridge Village
- ▶ Mystic Seaport and Aquarium
- ▶ Six Flags
- ▶ New England will be in a peak of leaf season
- ▶ We are surrounded by multiple state parks providing hiking and photo opportunities
- ▶ The Connecticut Wine Trail is one of the most exciting and fastest growing wine regions in the United States. A tremendous variety of wine styles and stunning scenery are to be enjoyed as you meander throughout our beautiful state.



Field Layout

One of many possibilities





Host Hotel

Publick House Historic Inn, Sturbridge, MA

- ▶ 30 minutes from venue
- ▶ 125 hotel rooms available
- ▶ 2 restaurants and a bar on site
- ▶ Hotel was used many times for WDC/Nationals/Regionals
- ▶ Premium rooms available for judges
- ▶ Promote social aspect of the event and camaraderie by keeping all exhibitors in one location, without the need to split between multiple hotels/locations.
- ▶ There are multiple hotel options in the area for overflow (Jorry has the list)

Airports

Many possibilities for international travel

- ▶ National
 - ▶ Hartford, CT (1 hour)
 - ▶ Providence, RI (1 hour)
- ▶ International - JFK, Philadelphia and Newark are the few airports Lufthansa is booking dogs to
 - ▶ Boston, MA (1 hour)
 - ▶ New York, NY (2.5 hours)
 - ▶ Newark, NJ (2.75 hours)
 - ▶ Philadelphia, PA (4 hours)



Lufthansa



to the USA

The entry requirements for dogs to the USA have changed as of 1 August 2024.

Based on the new requirements of the US national public health agency, the Centers for Disease Control and Prevention (CDC), new bookings for dogs to the USA can currently only be accepted to Atlanta, Los Angeles, Miami, New York-JFK, Philadelphia and Washington DC.

Update: with immediate effect, the transport of dogs to Newark (EWR) is possible again, provided that your dog has not been in a high-risk area (rabies) in the last six months before entering the USA.

The transport of animals as air freight to other destinations is also still possible. For this, please contact an animal freight forwarder.

We ask you to acquaint yourself with the new requirements in good time.

Thank you for your consideration

Ivana Karlsen
Quinebaug Schutzhund Club
qsc@quinebaugschtuzhund.org